

# Safari World: Kids can sharpen their photography skills while studying foreign exotic animals

By **Becky Horace** | Review | Published September 12, 2014

## Venue information

### Safari World

99 Panyaintra Road,  
Samwatawantok,  
Klongsamwa, Bangkok ,  
10510, Thailand



**Venue Type**  
Park

**Opening hours**  
Daily | 9am - 5pm

## Author information

### Becky Horace

Becky is an American expat, who arrived to Bangkok in January 2013. Upon her arrival, she took on the role of Chief Mommy Officer. She is a

[HOME](#) / [REVIEWS AND ARTICLES](#)

/ [SAFARI WORLD: KIDS CAN SHARPEN THEIR PHOTOGRAPHY SKILLS WHILE STUDYING FOREIGN EXOTIC ANIMALS](#)

If you are one who enjoys exotic animals but do not necessarily have the time or funds to go on an actual photo safari then you are going to love Safari World with their wide open spaces of the Safari Park that you can ride or drive through.



Just forty minutes to an hour away from the city, Safari World has been wowing spectators from around the world for over 26 years. After a few renovations,

freelance writer, Editor of BAMBI News. She is documenting her adventures through her writing and photography.

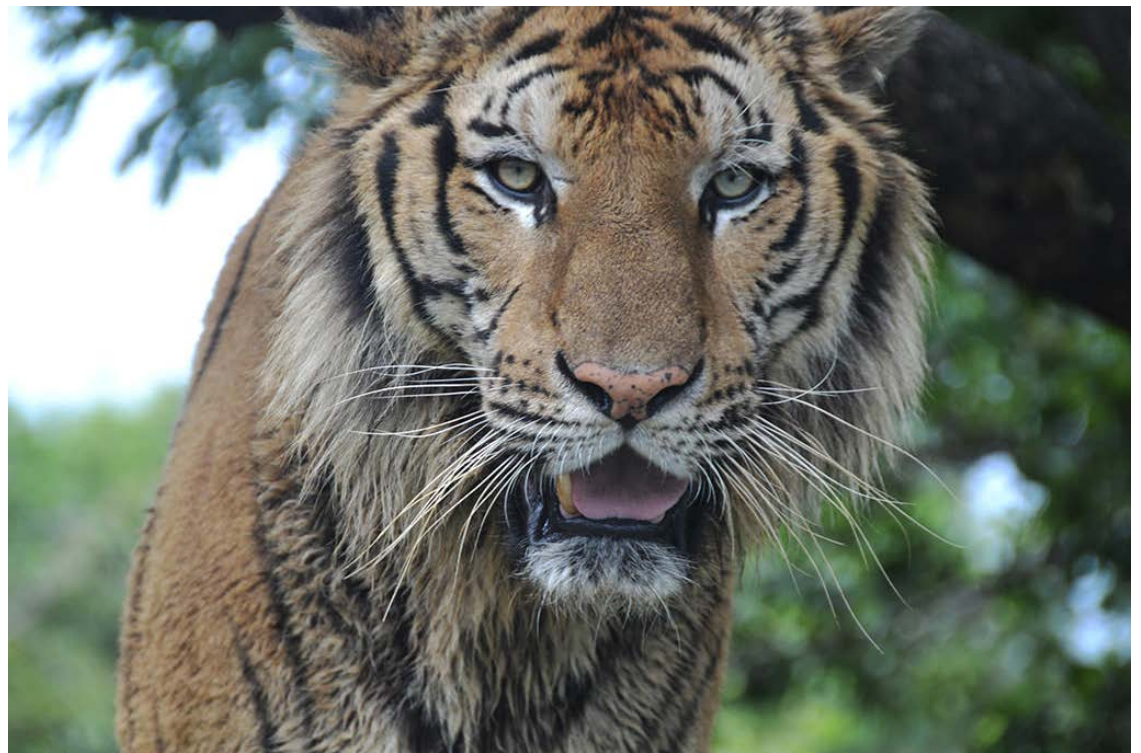
[becky@bkkevents.com](mailto:becky@bkkevents.com)

[@BeckyHorace](#)



Safari World is now home to an open air zoo and marine park which sits on roughly 200 acres of land. A visit to Safari World is an all-day event for your family to enjoy.

As you pull up to the park in your own vehicle or taxi, you can purchase your tickets at the ticket booth; here you will start the drive through the Safari Park. If you don't have your own car not to worry, Safari World has luxury coach buses that you can ride on or I have heard you can hire your taxi driver for a day and he will take you through the park but just make sure the taxi's windows can roll all the way up, this is especially important for when you enter the lion and tiger portion of the safari.



*Safari World - Tiger in the Safari*

**Share this Article**

The Safari Park drive is one big loop around the perimeter of Safari World. You begin your journey with a drive through the grasslands where you will see zebras, giraffes, rhinos, and camels munching on grass. During this portion you can have your windows down taking photos but be sure your curious child doesn't jump out of the car to go check out the animals. The drive continues for about thirty minutes to an hour depending on how long you linger if you are driving your own vehicle. This drive was a lot of fun for my toddler and a great opportunity to build up his vocabulary by pointing out the different animals,

their colors, and what they were doing. The most exciting part of the safari drive was driving through the lion and tiger portion of the park. This was where Safari World advises you “If your car breaks down, please do not get out. We will come to you!” There are also signs every few feet in many different languages warning guests to keep your doors closed and windows rolled up. If you are lucky enough, you might be able to time your driving tour with the big cat’s feeding time; this is when a caged vehicle drives through the habitat throwing out fresh meat.



*Safari World - Zebra in the Safari*

As the drive concludes, you are funneled into a parking lot where you can park and enter into the zoo and marine park portion of Safari World. Once inside Safari World, there are several restaurants with international and Thai cuisine which will please everyone in your group. During your exploration of the zoo portion of the park, you will see monkeys, reptiles, birds and so much more. There are also several different shows throughout the day for you to enjoy. We were able to stop for the sea lion show and the elephant show. From what we saw, the animals were well trained, performed well, and looked healthy.

## **Bottom Line**

Safari World is close enough to Bangkok to where you can make this an easy

family outing on the weekend even if you do not have a vehicle of your own. Your children will love seeing all of the different animals and as a parent this could be a phenomenal opportunity to educate your children on the different animals they encounter as well as how humans should treat and protect wild animals and their habitats all around the world.

***Safari World is open every day of the year from 9am-5pm. For more information you can check out their website (<http://www.safariworld.com/>).***

---

## Comments

Join the discussion. No login required

Email me replies



(Sept 12, 2014) **Mark** said:

Sounds like Jurassic Park ;-)

 flag

 like

 reply

[Home](#)

[About us](#)

[Advertise with us](#)

[Sell tickets with us](#)

[Reviews and articles](#)

[Our authors](#)

[Get in touch](#)

[Bangkok Events](#)

[Chiang Mai Events](#)

[Barcelona Events](#)

[Worcester Events](#)

[Bangkok venues](#)

[Nightlife](#)

[Concert](#)

[Cinema](#)

[Theatre](#)

[Activities](#)

[Art](#)

[Misc](#)



[Add Event/Venue](#)



[Like us on Facebook](#)



[Follow us on Twitter](#)



[Follow us on Google+](#)



[Download our App](#)

Join our newsletter and get connected with events around Bangkok

